



JBR ARCHITECTURE COLLEGE

HYDERABAD

(Promoted by Joginpally B R Educational Society)

(Approved by Council of Architecture, New Delhi; Affiliated to Jawaharlal Nehru Architecture and Fine Arts University, Hyderabad and ISO 9001-2015 Certified)

2.3.1 Student centric methods, such as experiential learning, participative learning and problem solving methodologies are used for enhancing learning experiences and teachers use ICT- enabled tools including online resources for effective teaching and learning process.

INDEX

| S.No | Description | Page No |
|------|--|---------|
| 1. | Participative learning - Team based learning. | 02 |
| 2. | Experiential learning - Hands on workshop. | 02 |
| 3. | Participative learning - Individual based learning. | 03 |
| 4. | Participative learning - Team based learning - Peer Learning - Think - Pair - Share. | 04 |
| 5. | Experiential learning - Teaching learning using LCD Projectors. | 05 |
| 6. | Experiential and participative learning - Students working on site. | 06 |
| 7. | Problem solving methodologies. | 06 |
| 8. | Teaching and learning through ICT Tools | 07 |

Participative Learning –Individual based learning

Thinking for architects/ sketching activity in campus, Semester-I – November'2022



Fig.7. Participative learning

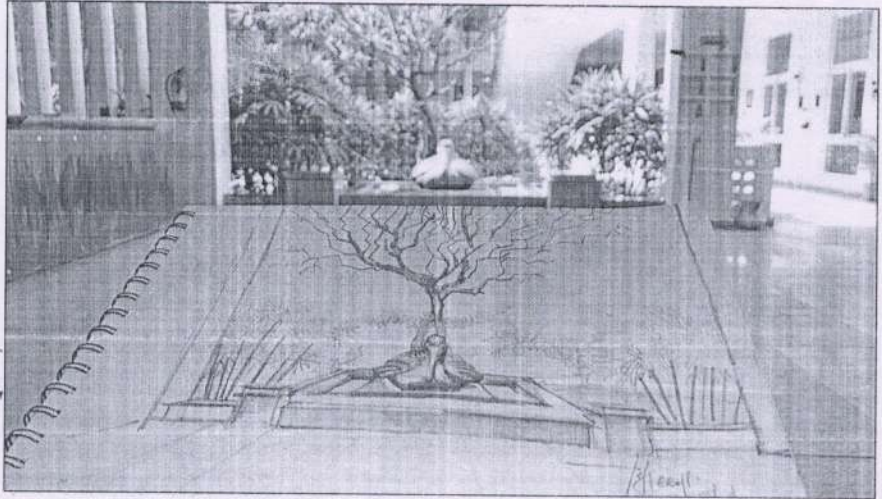


Fig.8. Individual based learning

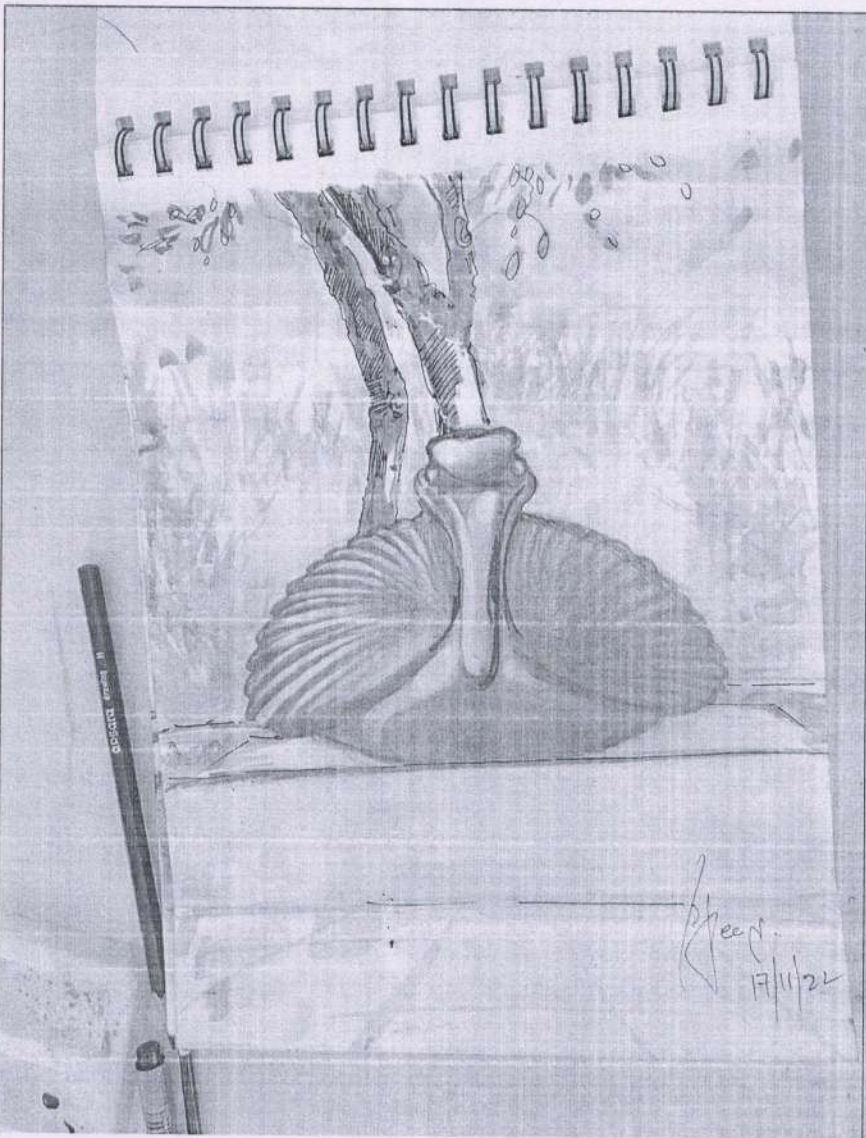


Fig.9. Individual based learning

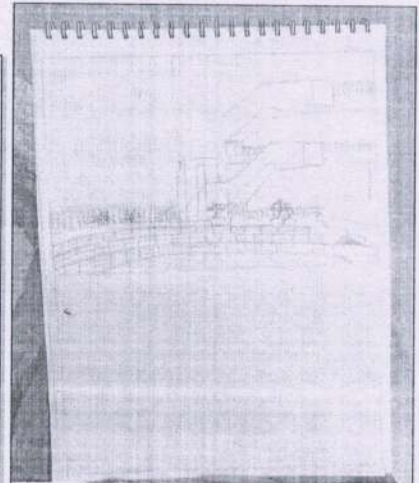


Fig.10. Individual based learning

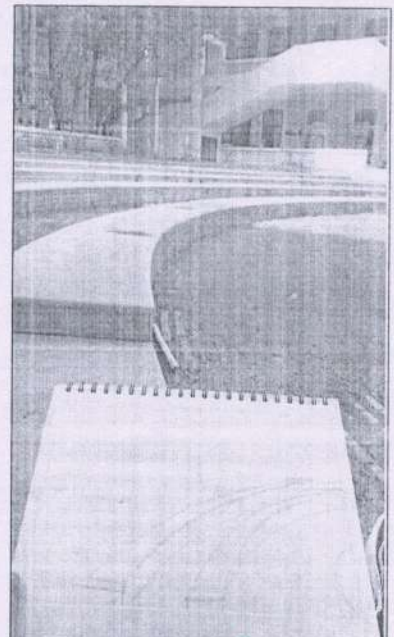


Fig.11. Individual based learning

Principals
PRINCIPAL
J.B.R. Architecture College
Bhaskar Nagar, Yenkapally (V),
Moinabad (M), R.R. Dist-500 075. T.S.

Participative learning – Team based learning – Experiential learning – Hands on workshop
Hands-on workshop attended by students of Furniture and Product Design, batch 2019-24, VIII th semester, for practical application and implementation of product designing using sustainable materials such as clay, terracotta, wood and fibers - May 2023



Fig.1. Participative learning



Fig.2. Experiential learning



Fig.3. Team based learning



Fig.4. Hands on workshop



Fig.5. Hands on workshop



Fig.6. Experiential learning

[Signature]
PRINCIPAL
J.B.R. Architecture College
Bhaskar Nagar, Yenkapally (V),
Moinabad (M), R.R. Dist-500 075. T.S

Participative learning – Team based learning – Peer learning – Think – Pair - Share

Cultural political studies , Semester IV - Hands on collage - mixed media , ANTHROPOLOGY – April '2022

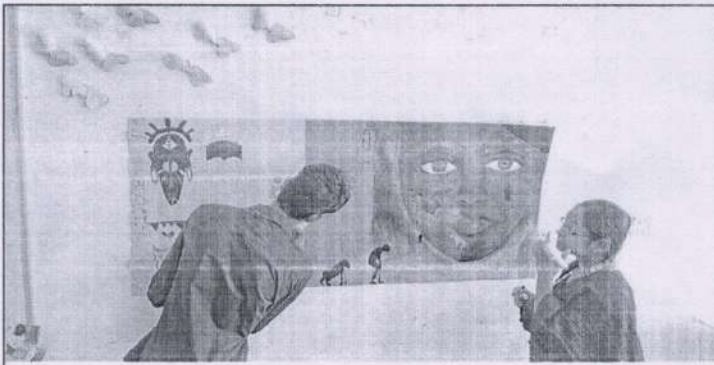


Fig.12. Participative learning



Fig.13. Team based learning



Fig.14. Think – Pair - Share



Fig.15. Team based learning



Fig.16. Peer learning

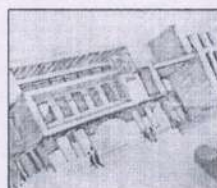
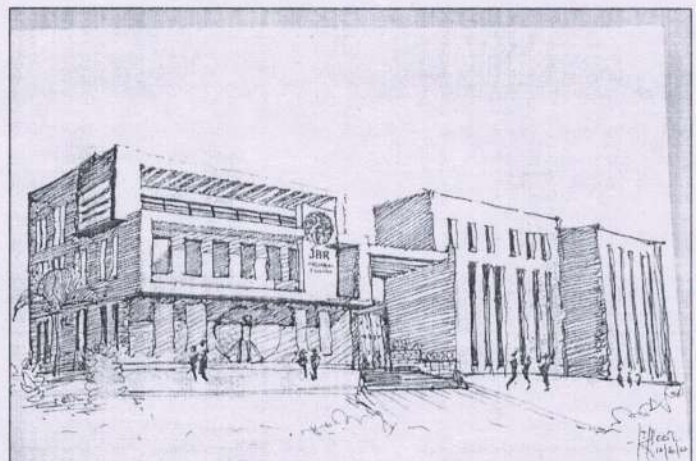


Fig.17. Peer learning



**ARCHITECTURAL DRAWING AND GRAPHICS
SEM 2**

Unit 3: BASIC RENDERING TECHNIQUE

Introduction to Black and White Medium • Pen and ink; Pencil: Pastels etc introduction to rules of composition, study of Light, colors and tones, shades, tints in rendering exercises. encourage Tone styles-stippling, hatching dots, overlapping, blending etc Exercises in rendering of 3D forms and Architecture.

Fig.18. Peer learning

Signature
PRINCIPAL
J.B.R. Architecture College
Bhaskar Nagar, Yenkapally (V),
Mangaluru (M), R.R. Dist-500 070 T.S



Fig. 19. Experiential learning – Teaching learning using LCD projectors



Fig. 20. Experiential learning – Teaching learning using LCD projectors

Fig. 22. Experiential learning – Teaching learning using climatology lab instrument

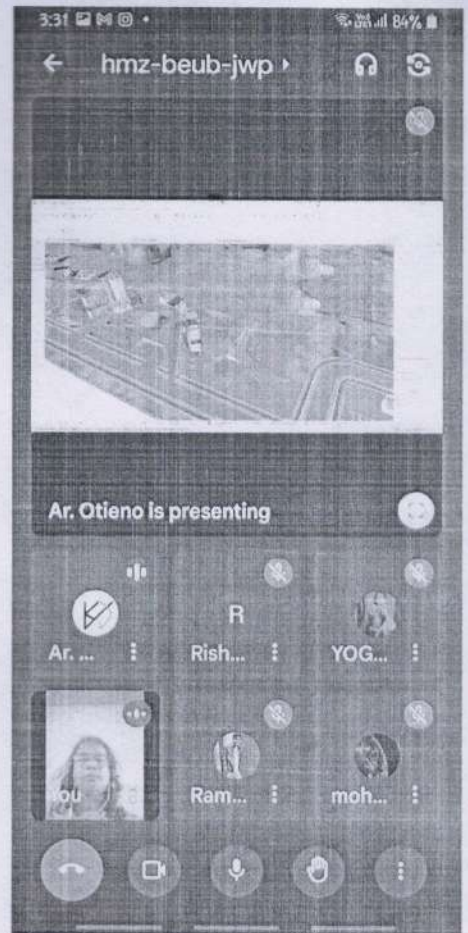


Fig. 21. Students having e-classes – Project based learning



Fig. 23. Experiential learning – Teaching learning using climatology lab instrument

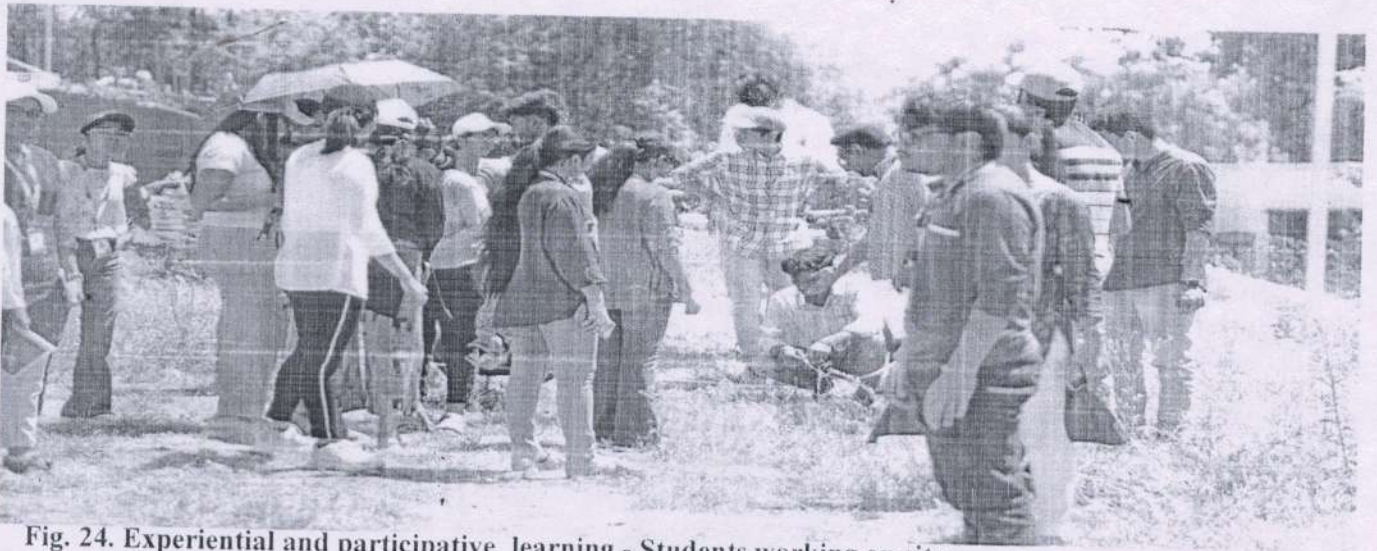


Fig. 24. Experiential and participative learning - Students working on site



Fig. 25. Experiential and participative learning - Individual based learning - Students working in computer lab



Fig.26. Problem solving methodologies – tutorials – Students working in library

Signature
PRINCIPAL
J.B.R. Architecture College
Bhaskar Nagar, Yenkapally (V),
Moinabad (M), R.R. Dist-500 075. T.S

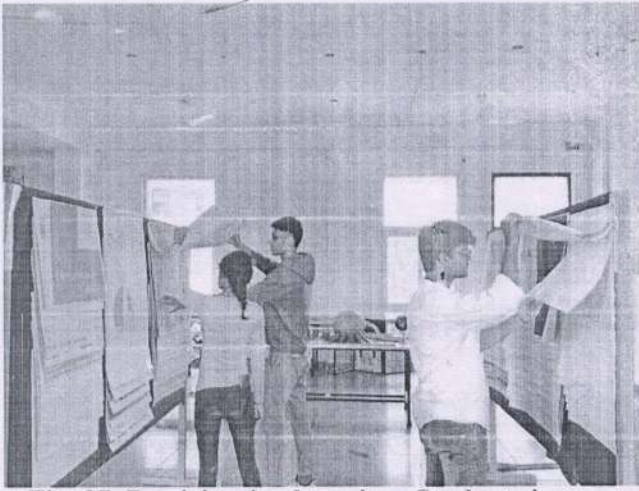


Fig. 27. Participative learning -Students in exhibition hall



Fig. 28. Experiential learning – Project based learning - Individual based learning - External Jury

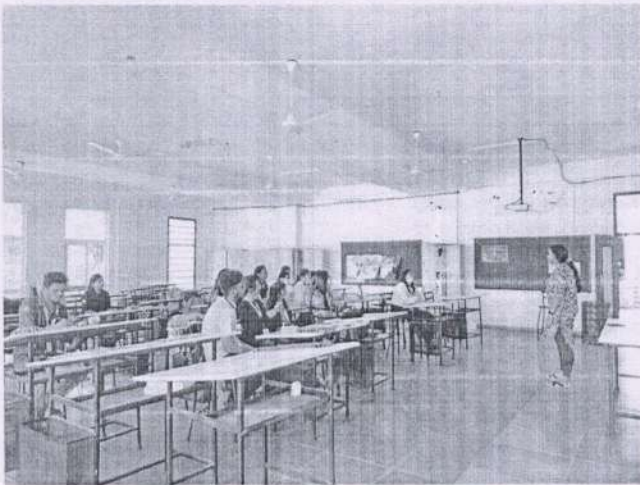


Fig.29. Teaching and learning through conventional chalk and talk method and using LCD projector too -Students having lecture

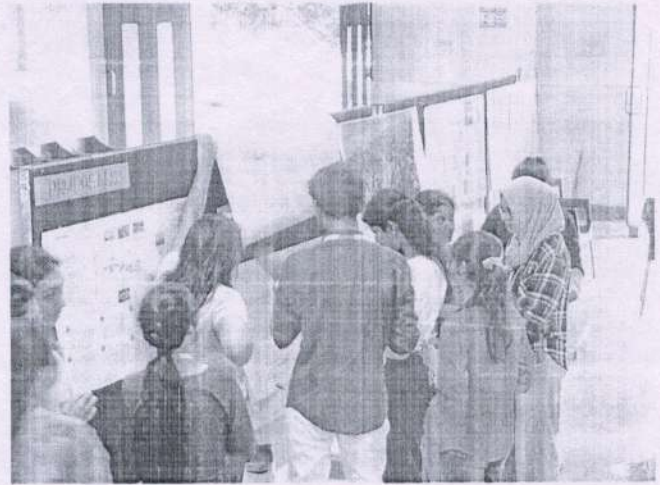


Fig.30. Participative learning -Students in auditorium



Fig. 31. Participative learning and Experiential learning - Students in exhibition hall



Fig.32. Experiential learning - Students having practical on site classes